

**Shelley McNulty**

**Senior Lecturer, Dept of Design, Manchester School of Art**

**BA/MA Interior Design**

**International Lead for Design**

**Trustee of Interior Educators – subject association for Interior Design and Interior Architecture courses in the UK and Ireland**



**MANCHESTER  
SCHOOL OF ART**

# Creating space for collaboration



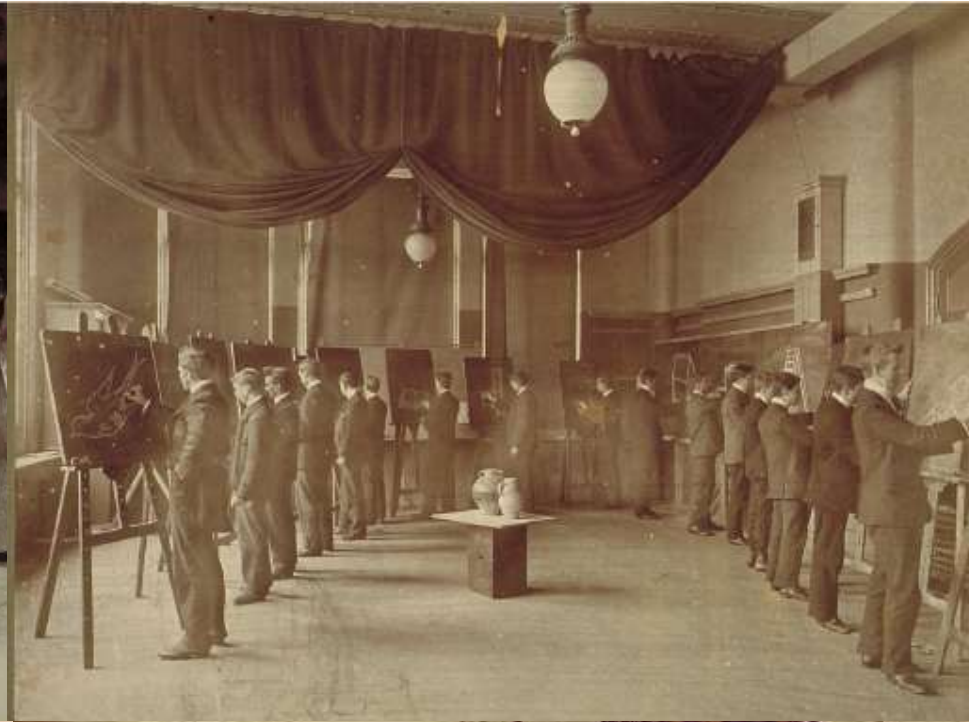




Manchester  
Metropolitan  
University

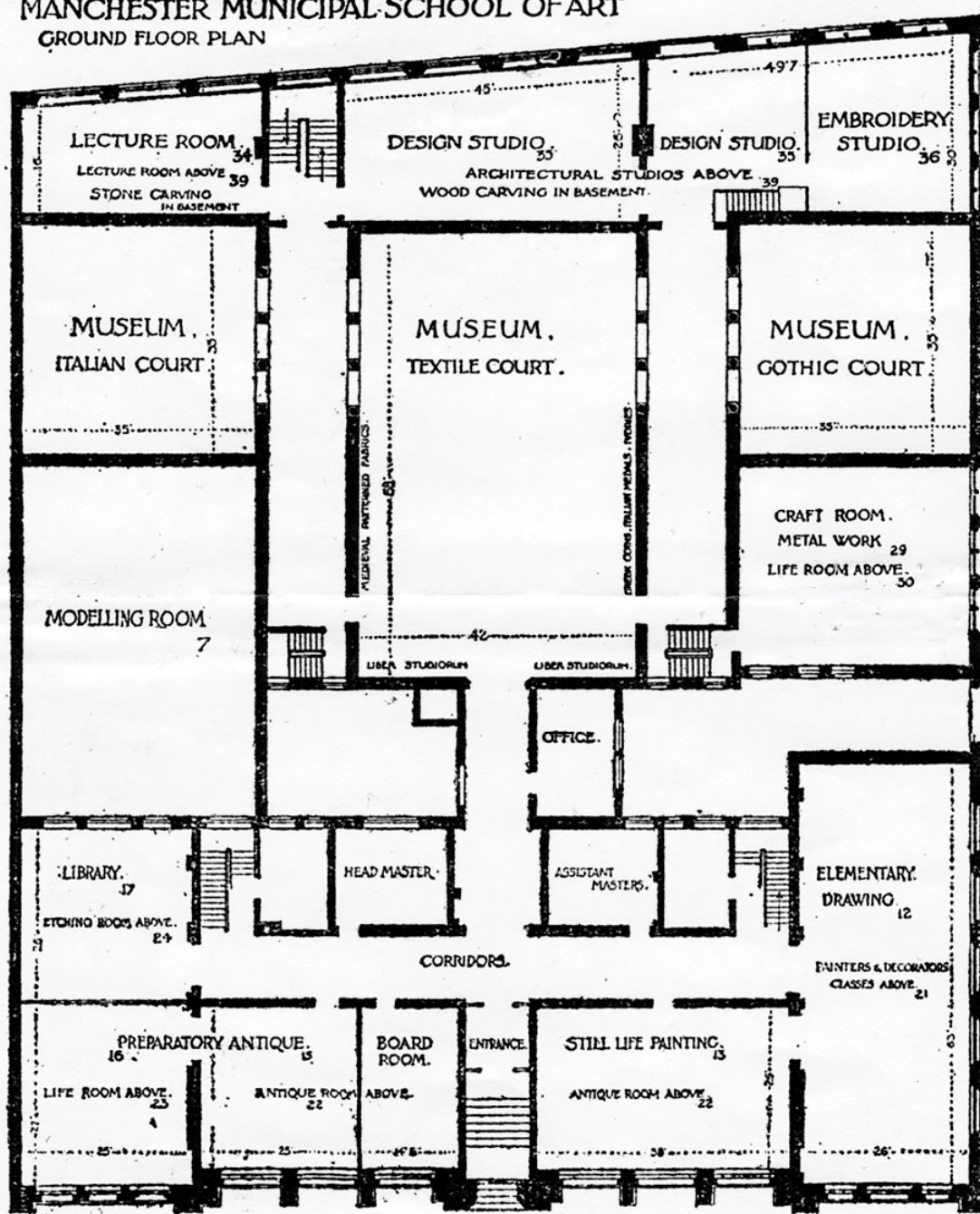
MANCHESTER  
SCHOOL OF ART







MANCHESTER MUNICIPAL SCHOOL OF ART  
GROUND FLOOR PLAN



MSSA Ground Floor Plan circa 1918

## List of Class Rooms and Subjects

---

### GROUND FLOOR.

- ROOM  
12.—Preparatory Drawing, Freehand and  
Object Drawing, Light and Shade.  
13.—Still Life Painting in Oil and Water  
Colours.  
15.—Preparatory Antique Drawing.  
16.—Preparatory Antique Drawing and  
Anatomy.  
17.—Library.

### BASEMENT.

- 7.—Modelling from Life, Antique, and  
Design.

### FIRST FLOOR.

- 21.—Painters and Decorators. Sign  
Writing, Graining and Marbling.  
22.—Drawing and Painting from the  
Antique Figure, Studies of Drapery.  
23.—Drawing and Painting from Life.  
24.—Etching and Aquatint.

## MUSEUM.

### GROUND FLOOR.

- Textile Court.  
Italian Court, East. Gothic Court, West.  
ROOM  
30.—Drawing from Life.  
29.—Goldsmiths' and Silversmiths' Work.  
Enamelling and Repoussé Work.

### NEW ROOMS.

#### BASEMENT.

- 31.—Stone and Marble Carving.  
32.—Woodcarving.  
33.—Stained Glass Work and Bronze  
Casting.

#### GROUND FLOOR.

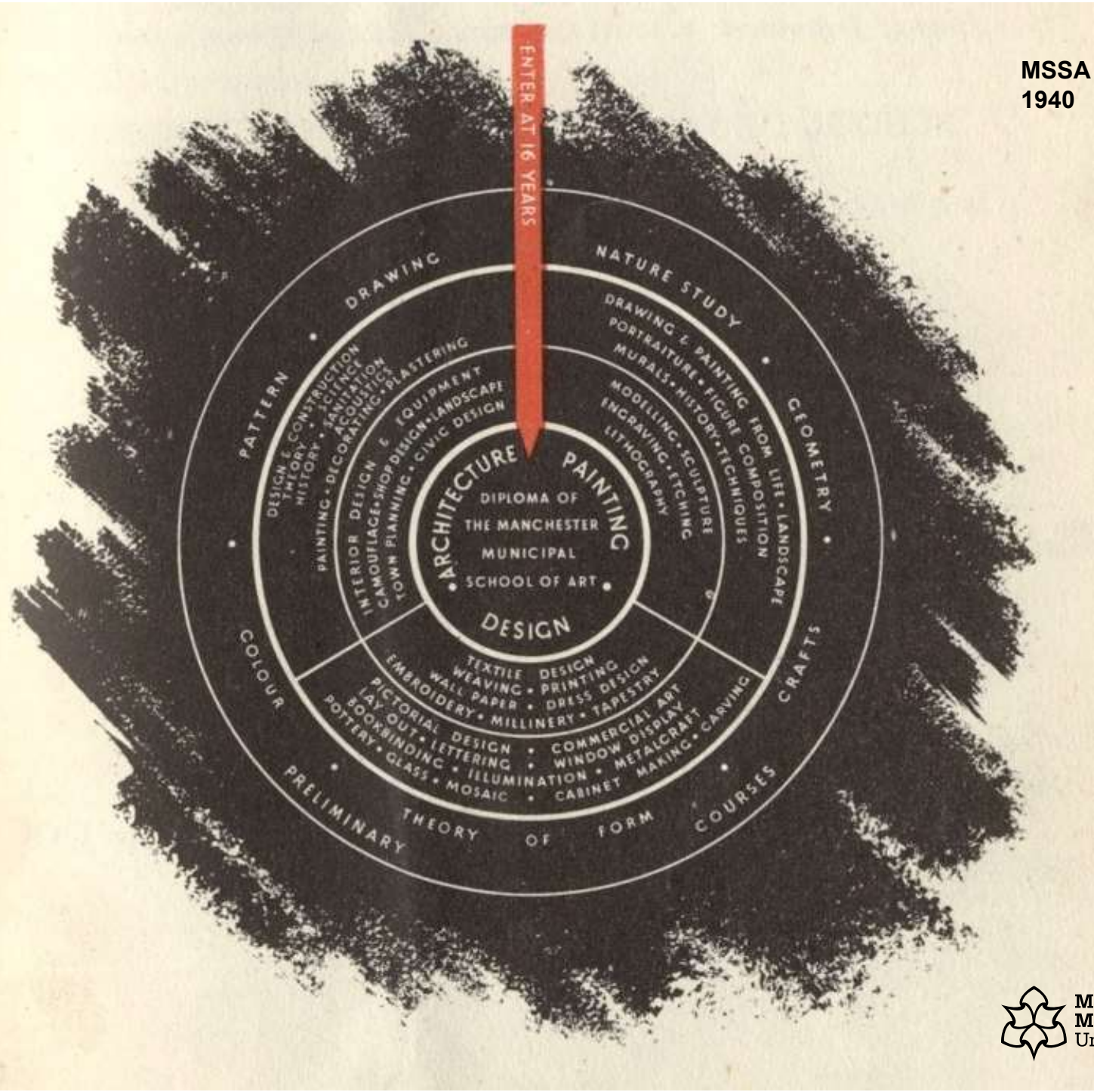
- 34.—Lecture Room.  
35.—Design.  
35A.—Design.  
36.—Embroidery and Dress Design.

#### FIRST FLOOR.

- 37.—Lecture Room.  
38.—Furniture and Interior Decoration.  
39.—Architecture.



MSSA Subject list in circa 1940



## **Undergraduate Programmes**

**Foundation Diploma in Art and Design**  
**INTO International Foundation**  
**Acting**  
**Animation**  
**Architecture**  
**Art History**  
**Art History and Curating**  
**Drama and Contemporary Performance**  
**Filmmaking**  
**Fine Art**  
**Fine Art and Art History**  
**Fine Art and Curating**  
**Graphic Design**  
**Illustration with Animation**  
**Interior Design**  
**Music and Sound for Media**  
**Photography**  
**Product Design**  
**Product Design and Craft**  
**Textiles in Practice**  
**Three Dimensional Design**

## **Postgraduate Programmes**

**Animation MA/MFA**  
**Architecture MArch**  
**Architecture & Urbanism MA**  
**Contemporary Curating MA/MFA**  
**Design: Craft MA/MFA**  
**Design: Embroidery MA/MFA**  
**Design: Fashion MA/MFA**  
**Design: Fashion Art Direction MA/MFA**  
**Design: Graphic Design & Art Direction MA/MFA**  
**Design: Illustration MA/MFA**  
**Design: Interior Design MA/MFA**  
**Design: Product & Furniture MA/MSc/MFA**  
**Design: Textile Practice MA/MFA**  
**Design: Textiles for Fashion MA/MFA**  
**Filmmaking MA/MFA**  
**Fine Art MA/MFA**  
**Landscape Architecture MLA**  
**Photography MA/MFA**

**Research Degrees MA by Research / MPhil / PhD**





Manchester  
Metropolitan  
University

MANCHESTER  
SCHOOL OF ART





MANCHESTER  
SCHOOL OF ART

175

What?  
Now!



Manchester  
Metropolitan  
University

MANCHESTER  
SCHOOL OF ART





Manchester  
Metropolitan  
University

MANCHESTER  
SCHOOL OF ART



WELCOME.

TONIGHT YOU WILL EMBARK ON A(N) *NEW FKIN* JOURNEY

THE FIRST  
OF ITS  
KIND

BRINGING TOGETHER THE  
WONDERFUL

OF THE BENZIE AND BEYOND

# COLLABORATION

TONIGHT TAKE A LEAP FULLY BEFORE STARTING A NEW

SEE THE PAST THREE YEARS OFF WITH A

BANG!

S GET *Merry*

SIGN HERE



Manchester  
Metropolitan  
University

MANCHESTER  
SCHOOL OF ART



**collaboration** |kəlabə'reɪʃn| noun [mass noun]

1 the action of working with someone to produce something: *he wrote a book in collaboration with his son.*

- [count noun] something produced in collaboration with someone: his recent opera was a collaboration with Lessing

*Oxford English Dictionary*



MANCHESTER  
SCHOOL OF ART

**collaboration** |kəlabə'reɪʃn| noun [mass noun]

1 the action of working with someone to produce something: *he wrote a book in collaboration with his son.*

• [count noun] something produced in collaboration with someone: his recent opera was a collaboration with Lessing.

2 **traitorous cooperation with an enemy: he faces charges of collaboration.**

*Oxford English Dictionary*



MANCHESTER  
SCHOOL OF ART



# Why collaborate?

# Developing skills students need for future employment





### In 2020

1. Complex Problem Solving
2. Critical Thinking
3. \* Creativity \*
4. People Management
5. Coordinating with Others
6. Emotional Intelligence
7. Judgement and Decision Making
8. Service Orientation
9. Negotiation
10. Cognitive Flexibility

### In 2015

1. Complex Problem Solving
2. Coordinating with Others
3. People Management
4. Critical Thinking
5. Negotiation
6. Quality Control
7. Service Orientation
8. Judgement and Decision Making
9. Active Listening
10. \* Creativity \*

*World Economic Forum, Future of Jobs Report*

## Developing skills students need for future employment

- In 2020**
1. Complex Problem Solving
  2. Critical Thinking
  3. \* Creativity \*
  4. People Management
  5. Coordinating with Others
  6. Emotional Intelligence
  7. Judgement and Decision Making
  8. Service Orientation
  9. Negotiation
  10. Cognitive Flexibility

- In 2015**
1. Complex Problem Solving
  2. Coordinating with Others
  3. People Management
  4. Critical Thinking
  5. Negotiation
  6. Quality Control
  7. Service Orientation
  8. Judgement and Decision Making
  9. Active Listening
  10. \* Creativity \*

*World Economic Forum, Future of Jobs Report*



# Encourage entrepreneurialism and creative risk taking



# Responsive, resilient learners



# Shape shifters / Change makers



**CITY ON WHEELS**  
BEHZE  
Towards the future

**City On**

NETWORK IDENTITY

STIMULUS

1 YEAR 10 YEARS

EMPATHY on WHEELS

WELCOME

CONCEPT POSTER

FEEDBACK

PLEASE TAKE A TICKET

QR CODE



Manchester Metropolitan University

MANCHESTER SCHOOL OF ART



# How do we create space for collaboration?

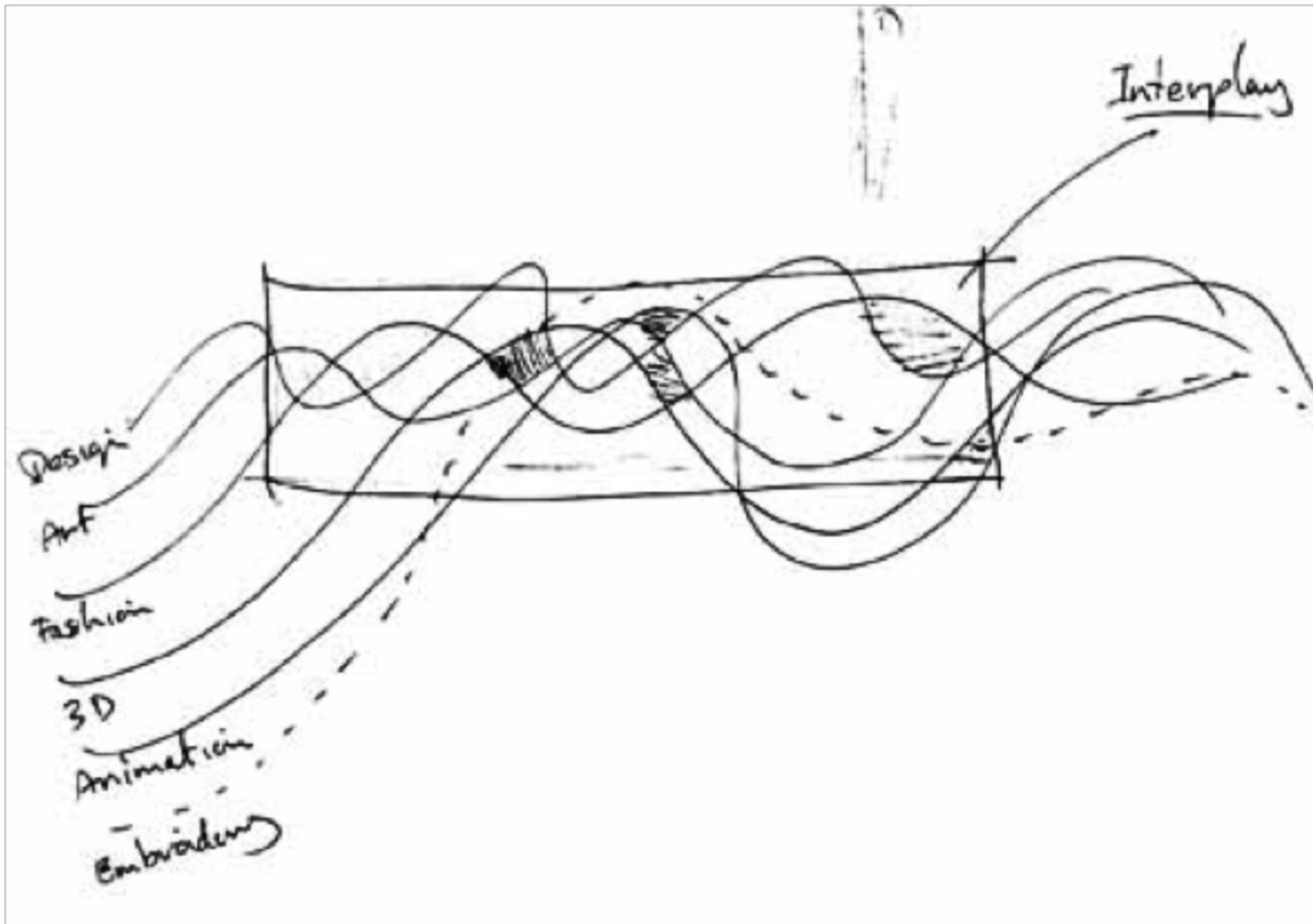




**How do we  
create space  
for  
collaboration?**

**Make space in  
the curriculum**





**25% of the UG curriculum is embedded in collaboration**

**Levels 4 & 5**



**Level 6**







**Unit X**



**Unit X brings together students from different disciplines to work on live project briefs created by a wide range of partner organisations working with our academic staff.**

It equips students to work confidently and professionally, as they collaborate, experiment and realise creative responses to briefs.

Throughout the unit, students share, develop and acquire skills - an experience that enriches their learning experience and broadens their understanding of industry.

The unit culminates in the **Unit X Festival**, a week of pop-up events and exhibitions that transforms spaces throughout the city into urban galleries and event spaces. This festival celebrate the outcomes of the Unit X project, created by some of Manchester's best up and coming artists, designers, filmmakers and photographers.

**Awarded the Sir Mischa Black Award**

**Level 4 – Collaboration**

**Level 5 – Live Briefs**

**Level 6 – Professional Development**



**MANCHESTER SCHOOL OF ART**



**How do we  
create space  
for  
collaboration?**

**Use the City as  
a classroom**



**How do we  
create space  
for  
collaboration?**

**Use the City as  
a classroom**

**Engage  
stakeholders**



***“The work of Manchester Metropolitan University in integrating students into the life of the city is exemplary. The courses deliver inspiring programmes of work for and about the city. These help us to take a fresh view of Manchester, while enabling the university to raise student awareness of the diverse and collaborative pathways for them into the world of work. The school helps demystify learning and employment for our young residents, and inspires them to develop a career in the creative industries. As one of the city’s most significant growth sectors, nurturing talent and retaining graduates is of critical importance if that growth is to be sustained. The role of Manchester Metropolitan University in the continued success of the creative and digital sector in this city cannot be underestimated.”***

**Sarah Elderkin**

**Principal Policy Officer Policy, Partnerships and Research, Manchester City Council**



Festival Square | Instagram



**MANCHESTER  
SCHOOL OF ART**





8 May

### Intangible Cultures

In collaboration with Donghua University, Fashion students will be exhibiting a collection of garments inspired by traditional Miao embroidery.

#### The Centre for Chinese Contemporary Art

13 Thomas St, Manchester M4 1EU

5pm – 7.30pm

8 – 9 May

### Little Inventors

Led by Dominic Wilcox Design, the Little Inventors project will create innovative and surprising objects inspired by children's drawings of furniture.

#### Arch 7

Temperance Street, Manchester M12 6HR

Wed 5.30–9pm, Thu 10–5pm

8 – 9 May

### MIF Festival Square

Themed around the experience of food and inspired by the MIF19 Programme, Unit X students from a range of disciplines bring their expertise together to create two spaces for the Festival's takeover of Albert Square this July, with a flexible approach to both corporate and public use.

#### Arch 7

7 May

### Useful Culture

A day of activities at the gallery. This project is based around the history of the art gallery, the relationship with the early days of the art school and what the value and function of the art gallery is / could be.

#### Manchester Art Gallery

Mosley St, Manchester M2 3JL

10am – 5pm

8 May

### Language, Material, Meaning / Zine and Exhibition

Focusing on the playful relationship between language, material and meaning, students have been producing zines that explore language, art and contemporary life.

#### Terrace NQ

43 Thomas St, Manchester M4 1NA

5.30pm – 8pm

8 May

### Rebel Tartan

A collection of garments created by Fashion students, taking inspiration from the Rebel Tartan Project's Bluehart tartan.

#### The Centre for Chinese Contemporary Art

13 Thomas St, Manchester M4 1EU

5pm – 7.30pm

**BBC**

**Design Council**

**Global Future Council for Information  
Entertainment**

**British Film Institute**

**Universal Studios**

**Cosgrove Hall**

**Aardman Studios**

**Royal Northern College of Music**

**Manchester International Festival**

**Victoria and Albert Museum**

**Manchester City Art Gallery**

**Whitworth Gallery**

**Future Everything Festival**

**Thomas Heatherwick Studios**

**Matthew Williamson**

**Jeremy Deller**

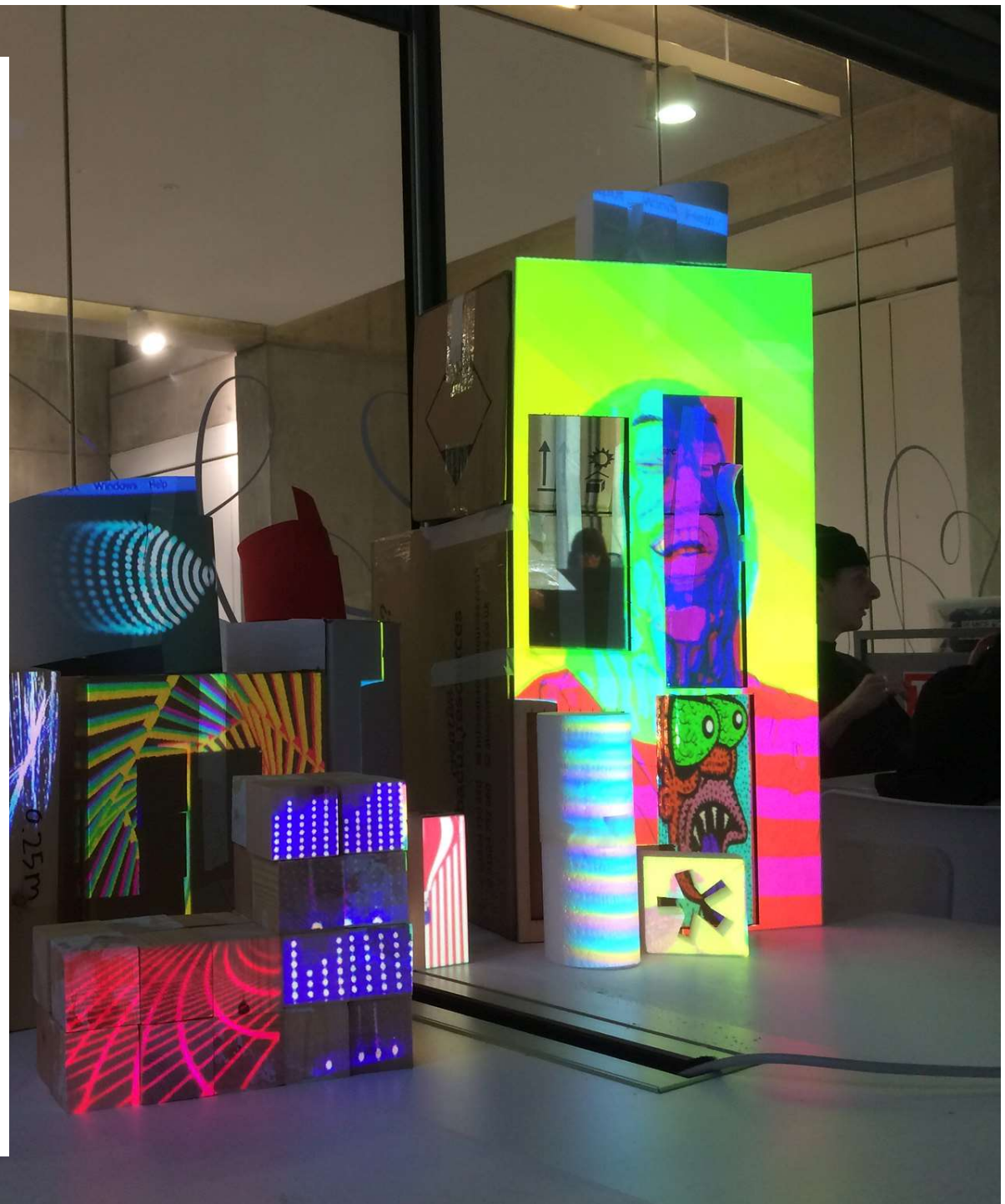
**Abercrombie & Fitch**

**English National Ballet**

**Royal Horticultural Society**

**Selfridges**

**Topshop**





**news & views**

[news](#)

[features](#)

[events](#)

[newsletter](#)

**categories**

[all](#)

[splash!](#)

[platform news](#)

[endorsed events](#)

**tags**

[adaa agm art & design awards](#)

[communication design congress](#)

[curriculum design awards](#)

[design education](#)

[design innovation design journal](#)

[design research design value](#)

[executive board](#)

[international meeting](#)

[member profile](#)

[multidisciplinary design](#)

[professional design](#)

[professional issues winners](#)

## Member news | Global Design Camp: a collaborative student project between Hong Kong Design Institute (HKDI) and Manchester Metropolitan University (MMU)

04 September 2019



**global design camp: students from hong kong and the UK collaborate on five challenge areas**

**How do we  
create space  
for  
collaboration?**

**Spaces that  
Encourage it  
everyday**





Manchester  
Metropolitan  
University

MANCHESTER  
SCHOOL OF ART

**Based on the concept of a northern factory**





Based on the concept of a northern factory



Front of house / vertical gallery

# New School



Front of house / vertical gallery

Factory floor / Design Shed



# New School



Front of house / vertical gallery

Factory floor / Design Shed

Engine room/ Workshops



Manchester  
Metropolitan  
University

MANCHESTER  
SCHOOL OF ART























# School of Digital Arts Opening Autumn 2021







Manchester  
Metropolitan  
University

MANCHESTER  
SCHOOL OF ART



**How do we  
create space  
for  
collaboration?**

**Reality Check!**



**How do we  
create space  
for  
collaboration?**

**These spaces  
are intimidating!**



**How do we  
create space  
for  
collaboration?**

**Limited for  
making**

**These spaces  
are intimidating!**



**How do we  
create space  
for  
collaboration?**

**Limited for  
making**

**These spaces  
are intimidating!**

**Space pressure**

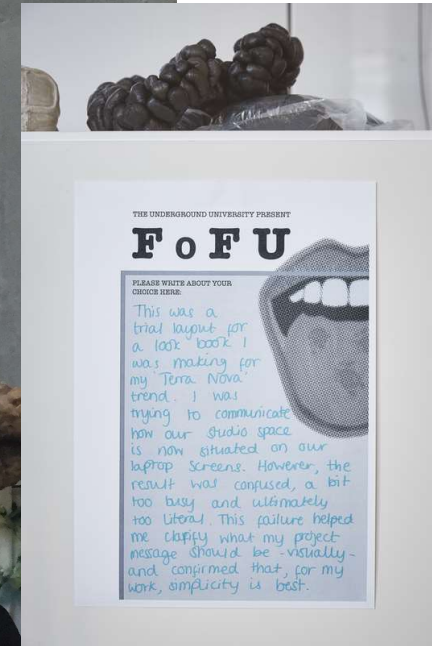


***Clandestine 2019***

**Interactive Arts student,  
Imogen (Millie) Ellerby Sansom**

**Vertical Gallery commission**





***'Fear of F\*\*King Up'***

**Student exhibition  
organised by Julie  
Haslam, Senior  
Lecturer**



**How do we  
create space  
for  
collaboration?**

**Don't over look  
the spaces in-  
between**





Manchester  
Metropolitan  
University

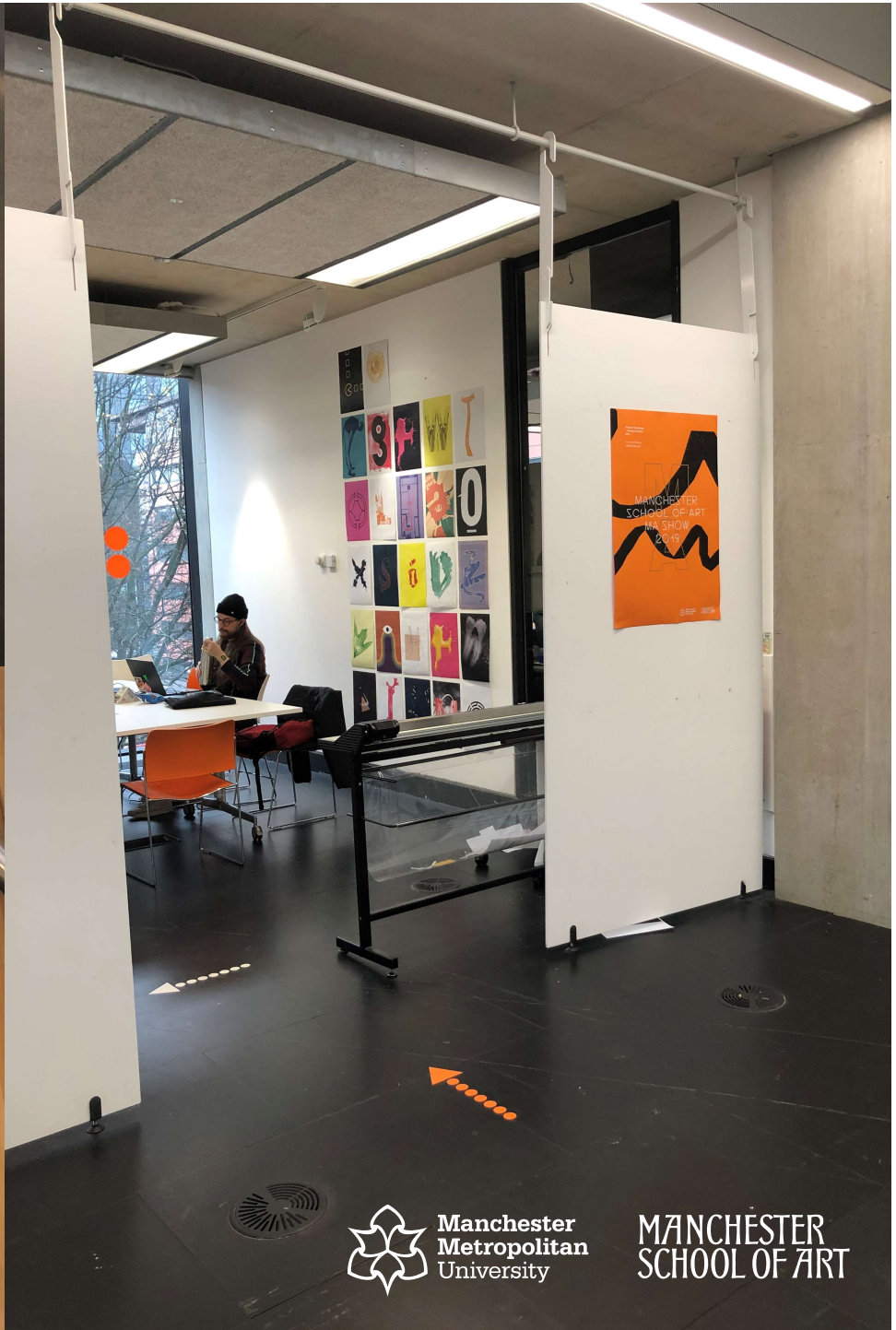
MANCHESTER  
SCHOOL OF ART



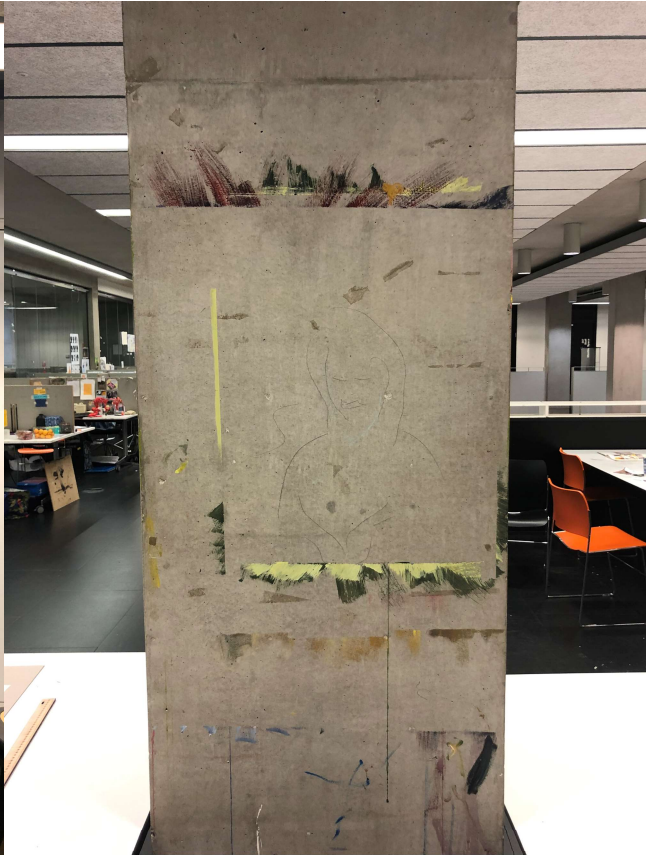
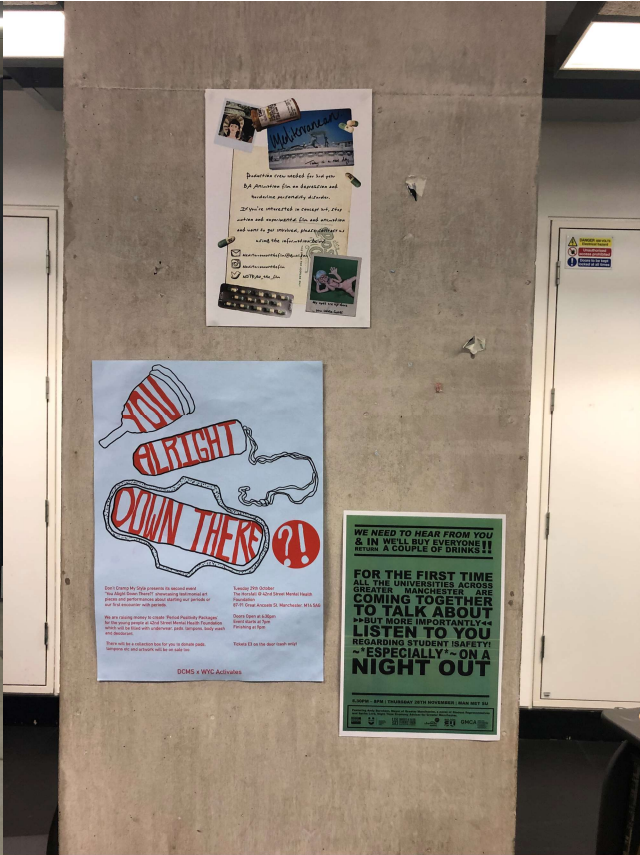












**How do we  
create space  
for  
collaboration?**

**The curriculum**

**The City (stakeholder)**

**The everyday**

**The liminal**



**How do we  
create space  
for  
collaboration?**

MANCHESTER  
SCHOOL OF ART

Manchester  
School  
of  
Art  
Degree  
Show  
2013

001  
175

June 15-19  
10.00 -  
16.00 hrs  
(Sat/Sun)  
10.00 -  
18.00 hrs  
(Mon - Wed)

**Explorers  
Are All  
We**

**Thank you**



**MANCHESTER  
SCHOOL OF ART**