



Dr Rhiannon Jones, University of Derby
Creative Director S.H.E.D

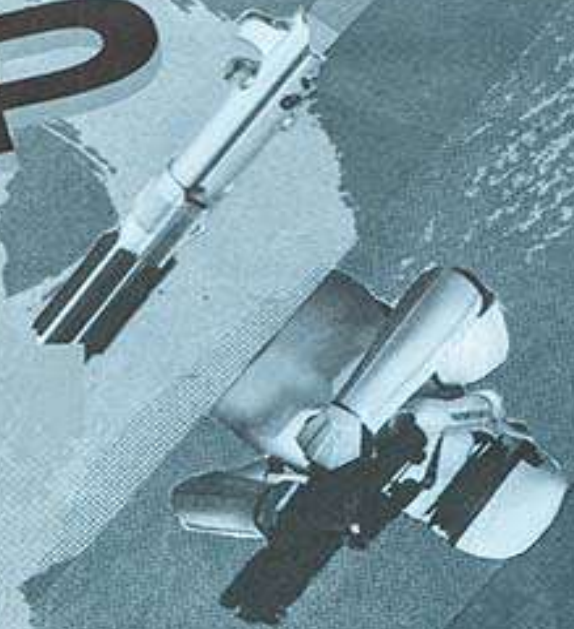
Shedding Preconceptions of place—shaping through participatory design and research.





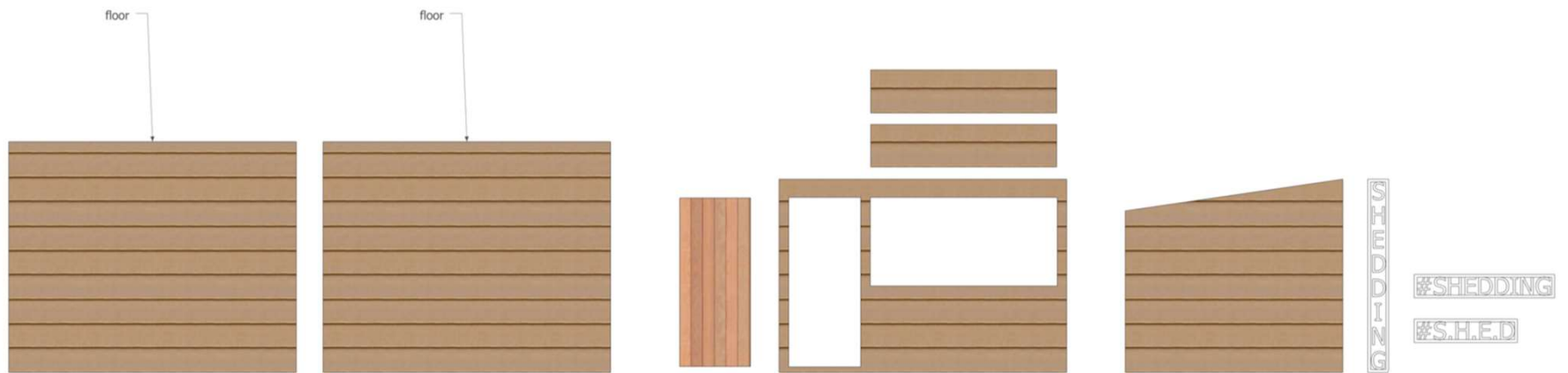
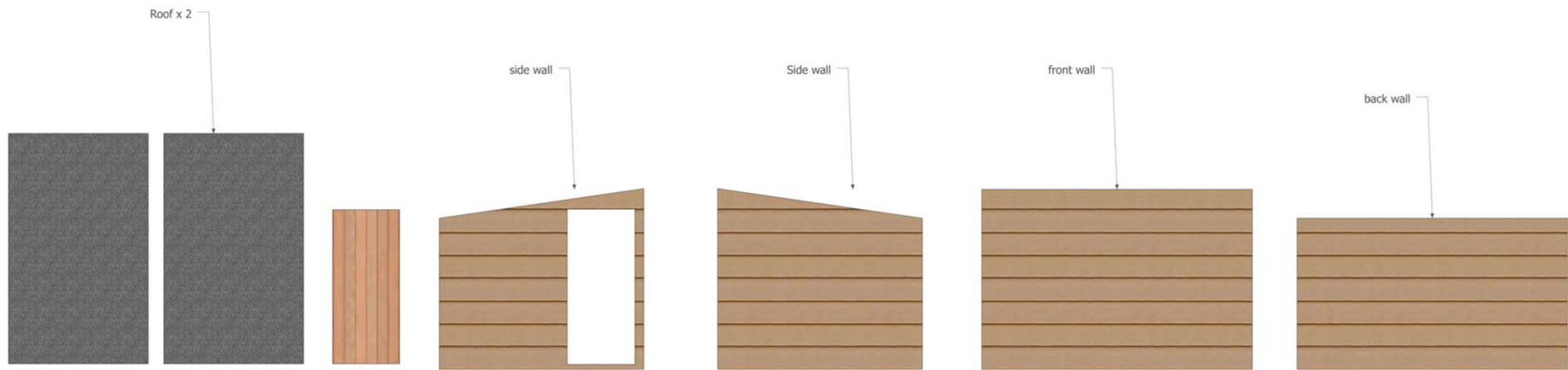
When you think about a satellite, you probably think of a small object orbiting Earth. But the reality is that satellites are a complex system of instruments and antennas that can do a lot of things. They can track the weather, monitor the environment, and even provide internet access. In fact, there are now over 10,000 satellites in orbit around the planet, and that number is growing rapidly. This is because satellites are becoming smaller and cheaper to launch, making them accessible to a much wider range of users. This is a great thing, as it means that more people can benefit from the power of space technology. However, it also means that there is a growing concern about the "space junk" problem. As more satellites are launched, the risk of collisions in space increases, and this could have serious consequences for the satellites that are still in orbit. It's a challenge that needs to be addressed if we want to continue to use space technology for the benefit of humanity.

When you think about a satellite, you probably think of a small object orbiting Earth. But the reality is that satellites are a complex system of instruments and antennas that can do a lot of things. They can track the weather, monitor the environment, and even provide internet access. In fact, there are now over 10,000 satellites in orbit around the planet, and that number is growing rapidly. This is because satellites are becoming smaller and cheaper to launch, making them accessible to a much wider range of users. This is a great thing, as it means that more people can benefit from the power of space technology. However, it also means that there is a growing concern about the "space junk" problem. As more satellites are launched, the risk of collisions in space increases, and this could have serious consequences for the satellites that are still in orbit. It's a challenge that needs to be addressed if we want to continue to use space technology for the benefit of humanity.





InDialogue is the only platform I know of that provides a space for substantive international exchange on issues associated with dialogue, across the boundaries of visual art, theatre and performance studies. It provides a rare opportunity for researchers and artists in all of these disciplines to learn from each other and does a great deal to advance the critical conversation in this burgeoning field. As dialogue and participation become ever more central methods across the arts and humanities events like InDialogue will only become more important.
(Grant Kester, 2015)



S.H.E.D

- <https://vimeo.com/373748014>



Concept

S.H.E.D is entirely dedicated to artistic research through public engagement and co-production.

S.H.E.D is a mobile, flatpack touring structure that has 8 configurations to support diversity, designs for dialogues and untold stories, from multidisciplinary fields and all people, especially from those that usually do not have voice.

As a public art space, it is accessible and inclusive, providing a platform for emerging and established practitioners/artists. <https://www.derby.ac.uk/business-services/research-and-expertise/shed/>



Concept



S.H.E.D is designed to consolidate researchers practice

It is intended to foster research, showcase best practices and inform discussion about important issues related to people, public and spaces in our changing and evolving societies.

S.H.E.D invites action, motivated through/by socially, politically and culturally charged artistic research

S.H.E.D is an industry-connected and research-engaged project. S.H.E.D as a civic agent.

Endorsements

- **Ben Anderson, Creative Producer of S.H.E.D**, said: “It is a garden shed but it’s been transformed, and by being transformed, it can be transformative. “It’s a cross-disciplinary shed - it’s not just about the actual shed and the physical, practical side, but the fact it’s a mobile arts space and it’s about the people and the community. S.H.E.D is a vehicle to bring people together. It’s already starting those discussions. There’s 101 things that S.H.E.D will be and will do, now the challenge is to make them happen.”
- **Dr Nick Owen MBE, CEO The Mighty Creatives** “This is a fascinating project because it’s going to enable local communities, in the strangest of places, to engage with artists in the strangest of ways. “We’re going to find out a lot about those communities and those places in ways we’ve not anticipated.”
- **Professor Keith McLay, Pro Vice-Chancellor Dean of the College of Arts, Humanities and Education at the University of Derby**, said: “S.H.E.D provides a venue for the collection of data in the forum of narratives and stories, which will be far more accessible to people in local communities that may have otherwise not have been captured. I can see this project is at the cutting-edge of research and creative practice, and that is why it feels so exciting.”

Research

Artistically led multicomponent portfolio **research** project.

S.H.E.D is designed to ask the question how do we '*design for dialogue*'.

How does artistic research engage or engineer alternative sites for practice? It addresses the impact that mobile projects have on cultural, social and political discourse on place shaping for cities. It is an opportunity to rethink about the ambitions for S.H.E.D to be a literal and metaphorical vehicle for the transformation of dialogue.

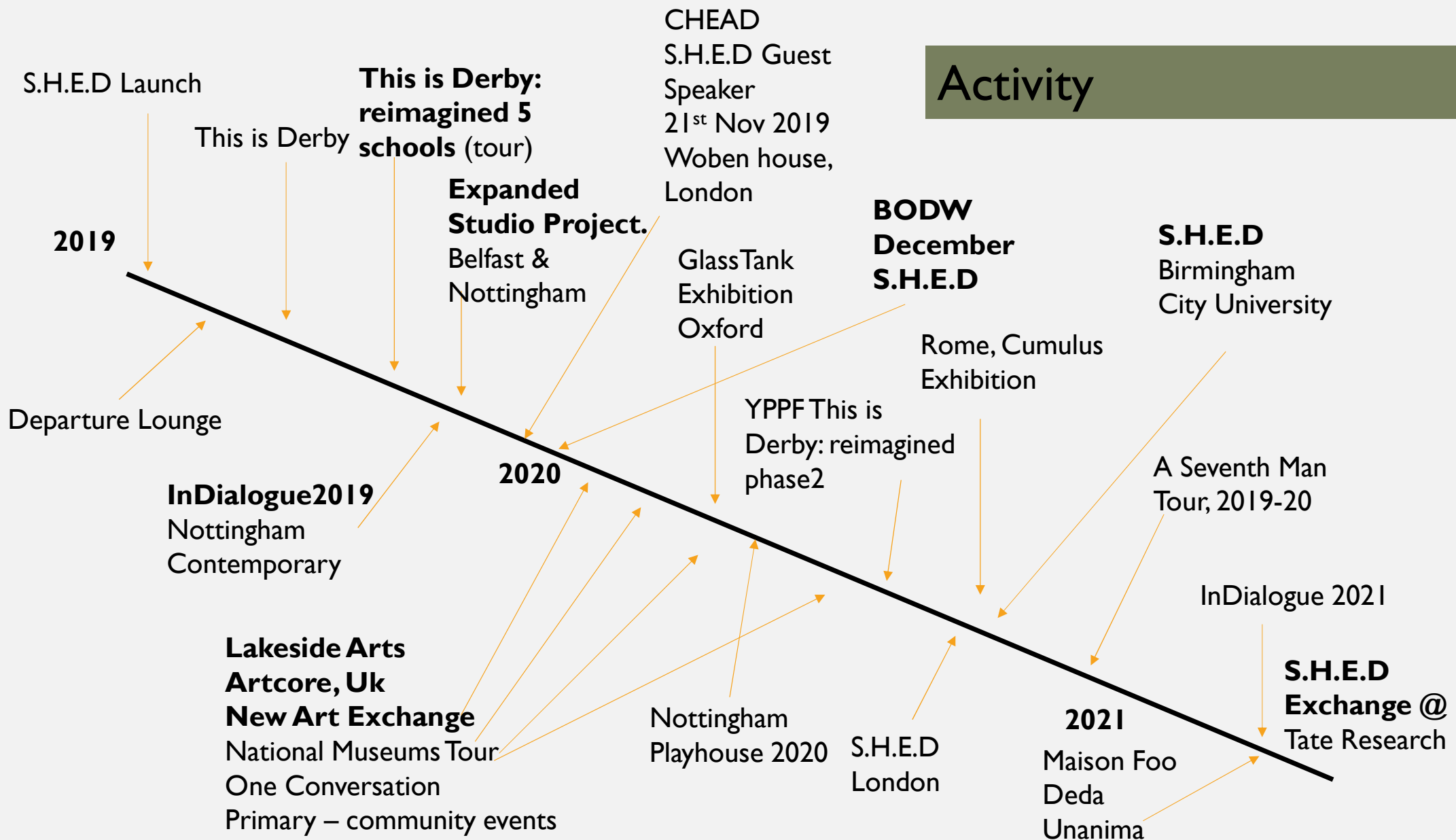
#SheddingPreconceptions #Shed

The project showcases the University's culture of curiosity, and the drive to create opportunities for our students and staff to be genuinely engaged with the city and region.

S.H.E.D is generating a successful portfolio of knowledge exchange activities and projects with demonstrable social, cultural and environmental economic impact. This may include, consultancy, delivery of creative learning programs, Licensing IP, the creation of a spinout company, a body of artistic practice, publications, public lectures, guest talks, collaborations with public, private and third sector organizations.

Research Rethinking Reconfigure Reimagine Reshape

Activity



S.H.E.D. IS ALL ABOUT

S.H.E.D. is a structure that reconfigures and transforms, and it is also a space that is transformative through the creative programming.

COMMUNITY
Community is embedded at the heart of all things S.H.E.D. From the very start of the design of this project, it has been all about finding a way to develop a programme of activity that can support and respond to public interest, and co-create activities and proposals for what S.H.E.D. could be with others.

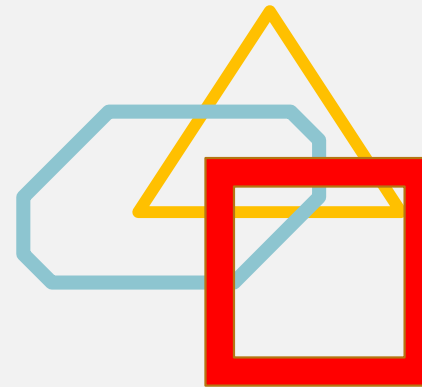
COMMISSIONING

S.H.E.D. will commission and develop a programme of diverse practice that will tour to a wide range of locations, cities, venues and neighborhoods. S.H.E.D. provides a mobile platform for artists to develop work, test out ideas and create new spaces for practice.

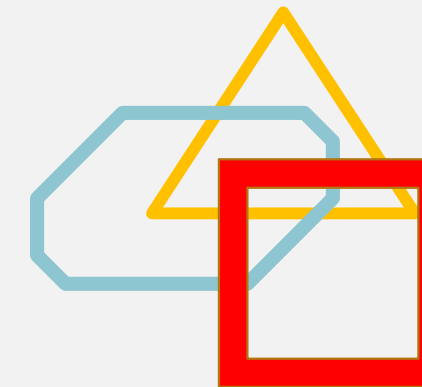


RESEARCH
This is an artistic research enquiry that is focused on the design of dialogue. Looking at how you can combine architectural and creative build elements of the design process and combine it with performative strategies for the creation of spaces.

S.H.E.D



**Option 1:
S.H.E.D**
Configured structure.
Staffing, support on
production and
marketing.



**Option 2:
S.H.E.D Presents**
Configured structure.
Curation of works
presented.
Staffing, support with
production, producing &
marketing.

Proof of Concept

- **S.H.E.D** generating a successful portfolio of knowledge exchange activities and projects with demonstrable social, cultural and environmental economic impact. This may include, consultancy, delivery of creative learning programs, Licensing IP, the creation of a spinout company, a body of artistic practice, publications, public lectures, guest talks, collaborations with public, private and third sector organizations.
- S.H.E.D Creative Director will continue to develop S.H.E.D that is influential in the relevant field by speaking at international conferences (Cumulus, Lapland 2019), (Arts in Society, Lisbon 2019*), (CHEAD National Members Annual Event, 2019), (InDialogue, 2019), (Belfast Expanded Studio Project, 2019*), (Cumulus, Rome 2020), (Oxford Brookes University, resident artist & exhibition 2020*).
 - *Funded by DCCT, DCEP, ACE, CHEAD, BelfastCityCouncil
- **S.H.E.D** has secured external funding, to further develop and maintain a portfolio of research grants and contracts.
- S.H.E.D will continue to Initiate, lead and collaborate in research initiatives with colleagues both within the University and externally.



- Portfolio of knowledge exchange activity
- Evidence of successful engagement in academic enterprise
- Partnership management skills
- Evidence of ability of build relationship and have active involvement in national and international networks and committees.
- Evidence of ability to negotiate effectively with external and internal stakeholders, funding bodies, professional, statutory and regulatory bodies.
- Commitment to the universities policies and procedures including promoting civic agenda.
- Building a track record of collaboration on externally funded projects and partnerships
- Engaging in high visibility involvement in regional, national and international enterprise bodies.

Impact



CONTACT

- <https://www.derby.ac.uk/business-services/research-and-expertise/shed/>
 - Dr Rhiannon Jones
 - R.Jones3@derby.ac.uk
 - @Shed_uk
 - @InDialogueUK

Endorsements

- **Debbie Gerring Headteacher at St Martins:**
- I am absolutely delighted that St Martins is involved with this project. S.H.E.D. will give our students a safe, exciting space to engage with a wide ranging 'arts' and sports offer. The project will give a voice for students in expressing their opinions, as well as a chance to explore and experiment with different artists and sports coaches. This activity will build their self confidence as they express freely and creatively their ideas and opinions, learn different skills and demonstrate their abilities. Students and staff will benefit from this involvement enormously as the 'arts' and sport will be given an enhanced and special status across school for the week. The impact of this will run deeply as the students, staff and school community more widely, will be challenged in a different way, raising curiosity and developing their sense of intrigue and wonder. I have no doubt that having the S.H.E.D. project in school for a week will provide lasting memories and great, shared experiences for our school community to treasure.

Press / Endorsements

Twitter: @SHED_uk

Link to images:

https://drive.google.com/drive/folders/1Re42jy8o4ka_juYg4FoVRlbOMb1gohbs?usp=sharing

<https://drive.google.com/drive/folders/1wuW9jxc95IXghuTSbvUr1SkB6zdW5bA4?usp=sharing>

Media Coverage:

<https://staff.derby.ac.uk/sites/executive/Pages/Vice-Chancellor-Ideas-Forum.aspx>

<https://www.derbytelegraph.co.uk/news/derby-news/university-derby-students-design-community-3066509>

<https://www.derby.ac.uk/news/2019/old-shed-becomes-art-gallery-and-soup-kitchen-to-bring-communities-together/>

<https://blog.derby.ac.uk/2019/07/derbys-creative-powerhouses/>

It starts at 23 minutes in to the show.

<https://www.bbc.co.uk/sounds/play/p07ngd67>

Draft Trailers:

<https://youtu.be/eIIKI08qva8>

<https://youtu.be/OVTaOQzInZM>