


CHEAD 21 November 2019 | Space and Place Forest of Imagination | Learning Everywhere



Dr. Penny Hay, Research Fellow, Centre for Cultural and Creative Industries, Senior Lecturer in Arts Education, Bath Spa University
Director of Research, House of Imagination

Slide 1

PH1

Penny Hay, 21/11/2016

Challenges and opportunities for creative education and participative research outside of the studio and off campus.

Forest of Imagination exemplifies an approach to space and environment as a catalyst for cultural change, creative pedagogy and promotes co-creation and collaboration with a range of diverse partners.







Forest of Imagination 2015.





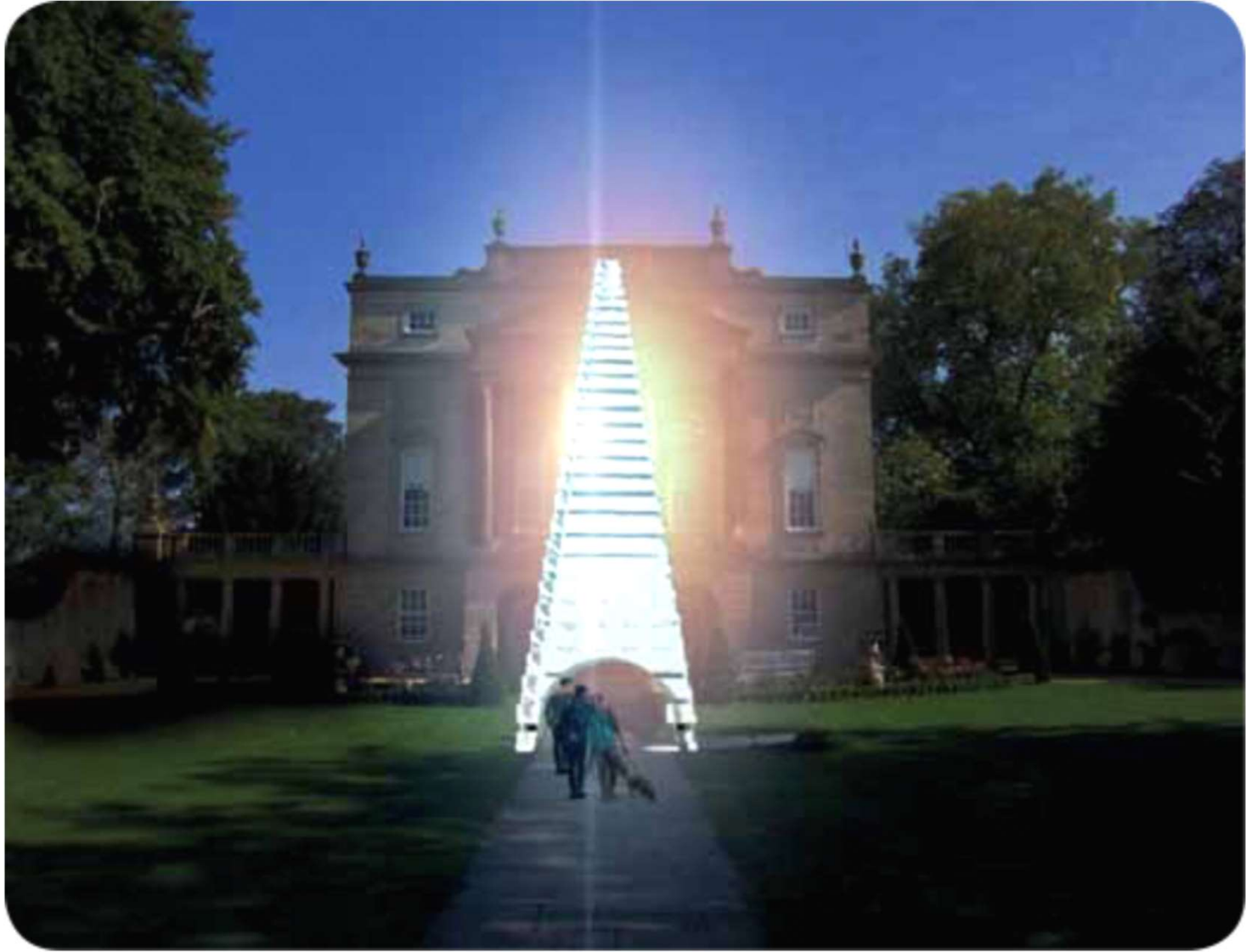
















SERIOUSLY PLAYFUL

IMAGINATION

participation

creative freedom

collaboration

exploration

engagement

DEMOCRATIC LEARNING

NATURAL ENVIRONMENT

co-production

PERMISSION

CREATIVITY

ART

WELLBEING

GROWTH

CREATIVE DISRUPTION/interruption

INNOVATION

REINVENTION

EVERYDAY ACTIVISM

reconnecting to NATURE/CITY

child-friendly

inclusivity

WILDNESS

MAGIC

CONTRASTS



**FOREST OF
IMAGINATION
IS A CREATIVE
ECOSYSTEM
FOR ART AND
PARTICIPATION**



“We believe that creativity can enhance wellbeing and transform lives, communities, cities and economies.

Forest of Imagination brings the creative ecology of the city to life.”

Andrew Grant, Grant Associates, Co-founder Forest of Imagination,
Chair of Bathscape

Key themes

creative and inclusive placemaking

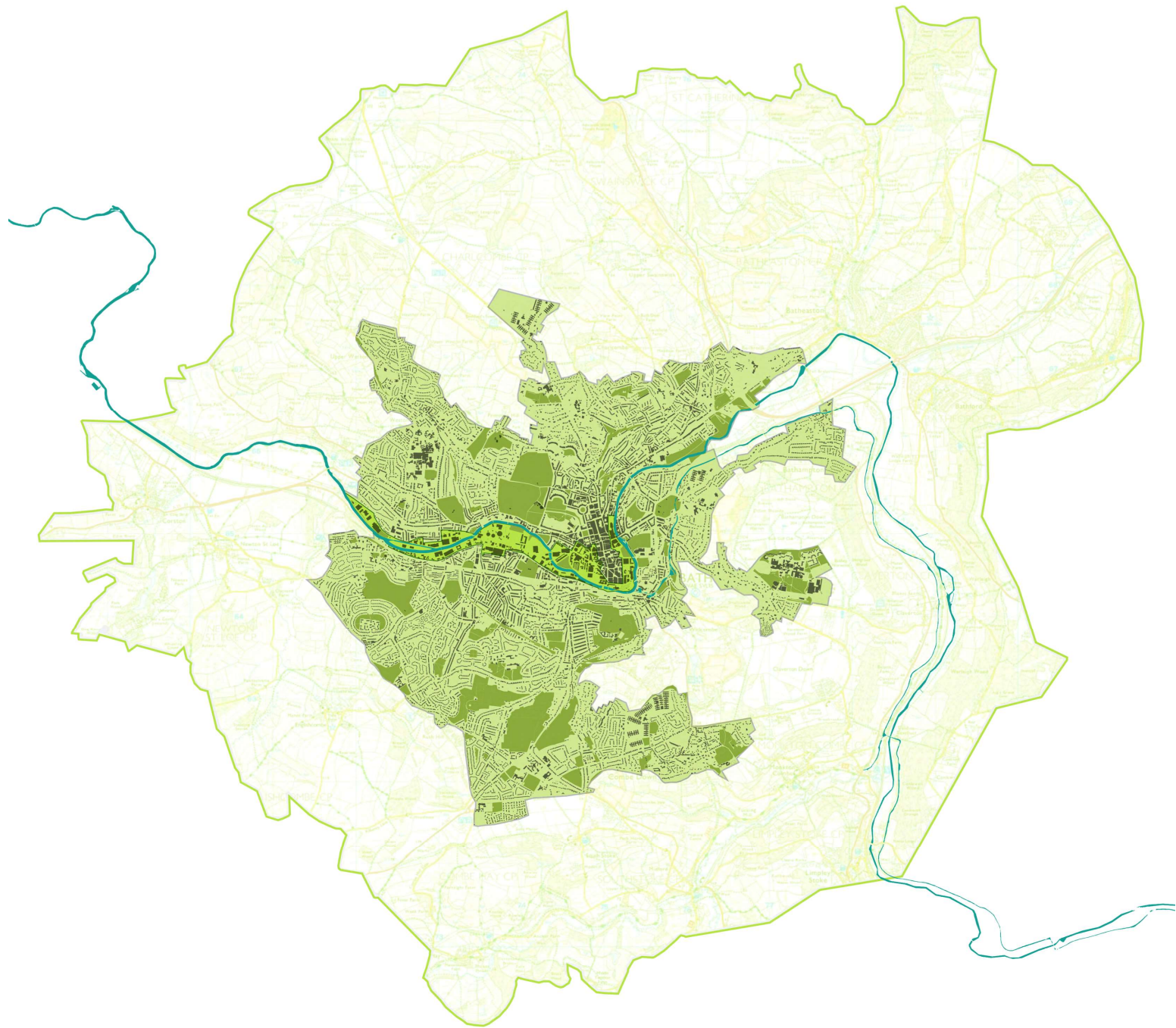
everyday creativity, co-design / co-creation

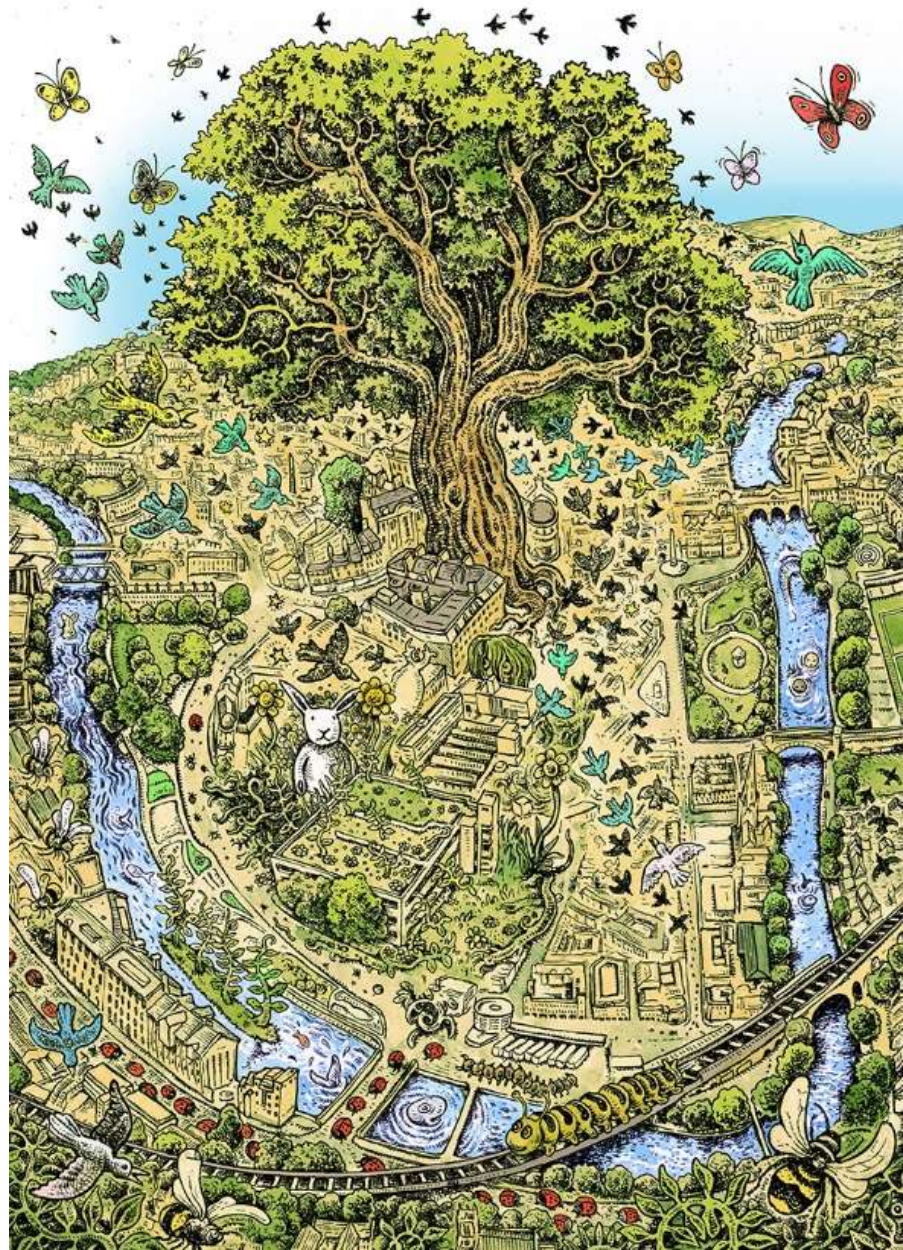
sense of belonging, engagement, wellbeing

connection to nature, sustainability

active citizenship, civic innovation

transformation





Signature projects:

5x5x5=creativity



School Without Walls
www.schoolwithoutwalls.org.uk



Forest of Imagination
www.forestofimagination.org.uk



House of Imagination
<https://5x5x5creativity.org.uk/>



ffi contact p.hay@bathspa.ac.uk